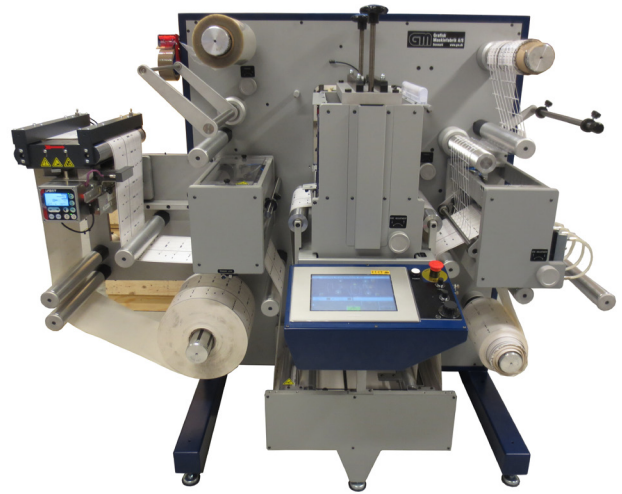


DC330NANO Label Converter



Ultra compact machine for laminating, die cutting and slitting.

The DC330NANO is the most compact unit in GM's series of label finishing machines. The NANO is built on the same rock solid die cut unit as our biggest DC units. A solid 20mm metal frame ensures a vibration free basis for the four large servo motors that drive the web. The NANO can be set up as an inline extension to a digital label press, allowing the web to continue directly into the converter from the digital press or as a standard offline unit. With semi-rotary die cutting, lamination and a genuine pneumatic knifebox with crush knives - it offers all you need for short run label production. If needed the NANO can work as a "blaco" label die cutter as well.

- **All-in-one solution with many options**

The DC330NANO has all you need to make labels. Lamination, die cut, slit & rewind as standard. Optional inline buffer module, back-scorer, large Ø600mm rewind

- **Precision cutting to reduce waste**

Print-to-cut registration in just one rotation no station; no station movement or mechanical setup required; semi- and full-rotary die cutting

- **Speed and versatility**

Adjustable repeat lengths from 2" - 22"; line speeds up to 32 semi /50 full-rotary m/min

- **Easy to learn**

The large graphical touch display shows the web-up and all function clearly in the local language

- **Servo-driven web tension control**

Ensures accurate processing over a wide range of substrates

- **Compact footprint**

Measuring only 1.6 x 1.6 m (5.25 x 5.25 ft) this compact design will fit into any shop

- **Easy web access and maintenance**

Cantilevered design

The DC330NANO integrates the advanced semi-rotary converting and lamination on a very compact platform. It is one of the most compact and economic finishers in the market.

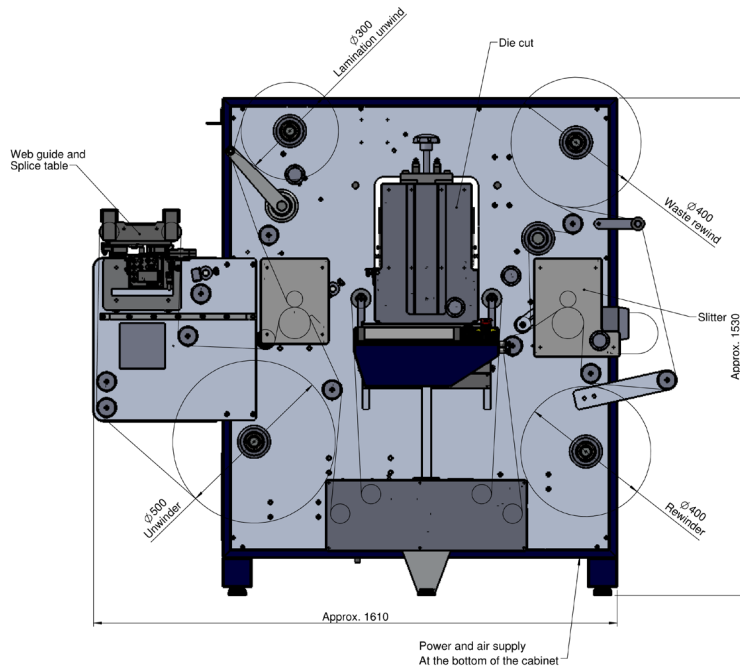
The unit is ideal for start-up's or existing digital printers looking for a backup unit.



www.gm.dk

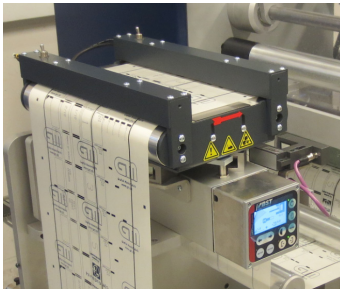
Converting made easy

DC330NANO

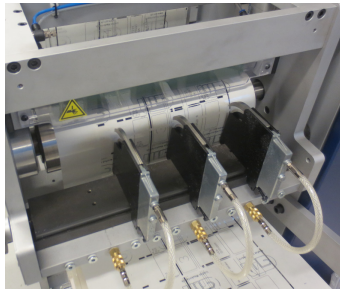


Specifications	(metric / imperial)	
Web width	200 mm - 330 mm	8" - 13"
Substrate thickness	20 µm - 200 µm	0.8 - 8 points
Die Station		
Speed in digital mode	32 m/min	105 ft/min
Speed in analog mode	50 m/min	165 ft/min
Die plate size	50.8 mm - 558.8 mm	2" - 22"
Rewinder/Unwinders		
Reel diameter on internal unwind max.	500 mm	19.7"
Single or dual shaft rewind max.	400 mm	15.7"
Core diameter	76.2 mm or 152.4 mm	3" or 6"
Lamination Station		
Maximum diameter	Ø300mm	11.8"
Laminate with liner	Possible on request	
Slitting Station		
Knife type	Pneumatic crush knife	
Minimum distance crush	12.7 mm	0.5"
Requirements		
Power & Air	3x400V+N+PE / 16 A / 5 bar air	
Size	1.6 m x 1.5 m x 1.7 m (W x H x D)	
Weight	800 kg	

Features



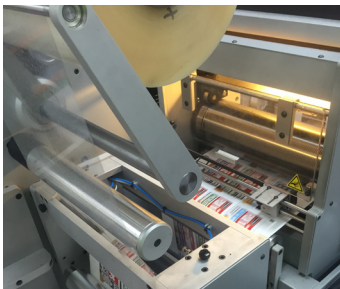
Splice table with tape dispenser and air-clamps for easy and break-free splicing.



Pneumatic crush knives with fast set screw. Knives are controlled from touch screen. Set your slitting up in a few minutes.



High precision servo controlled semi-rotary die cutter. Perfect re-register to digitally printed webs. Support for marks on transparent web.



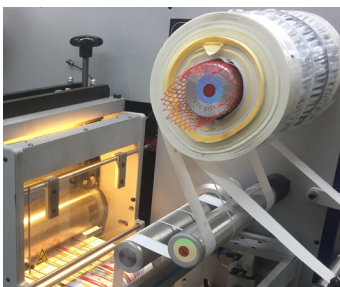
Unwind for self-adhesive unsupported laminates. Fast and trouble free protection of digital print. Optional support paper rewind.



Large 10" color touch display with clear indication of web path. Knobs for stepless tension setting on rewind spindles.



The short distance from unwind to rewind ensures minimum waste of material. The machine is easy to web up due to cantilevered design.



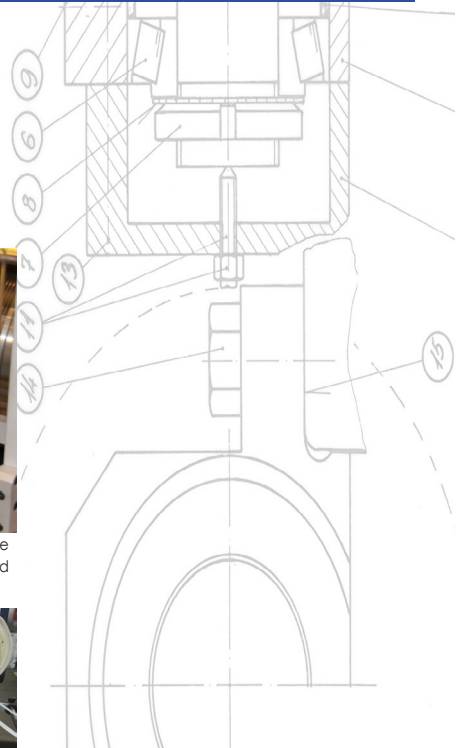
Side trim can be directed into the matrix waste rewind. This simplifies waste and eliminates need for external waste suction.



As standard the unit features a BST web guide with an ultra-sonic fork. The web guide supports normal and transparent webs.



Matrix stripping at a breeze. Two roller design - first a strip roller with anti-stick coating and then a waste rewind. Both with stepless tension.



www.gm.dk

Converting made easy

Grafisk Maskinfabrik A/S
Bregnerødvej 92
3640 Birkerød - Denmark

Phone: +45 45 81 23 00
Fax: +45 45 81 99 56
Email: gm@gm.dk
Web: www.gm.dk